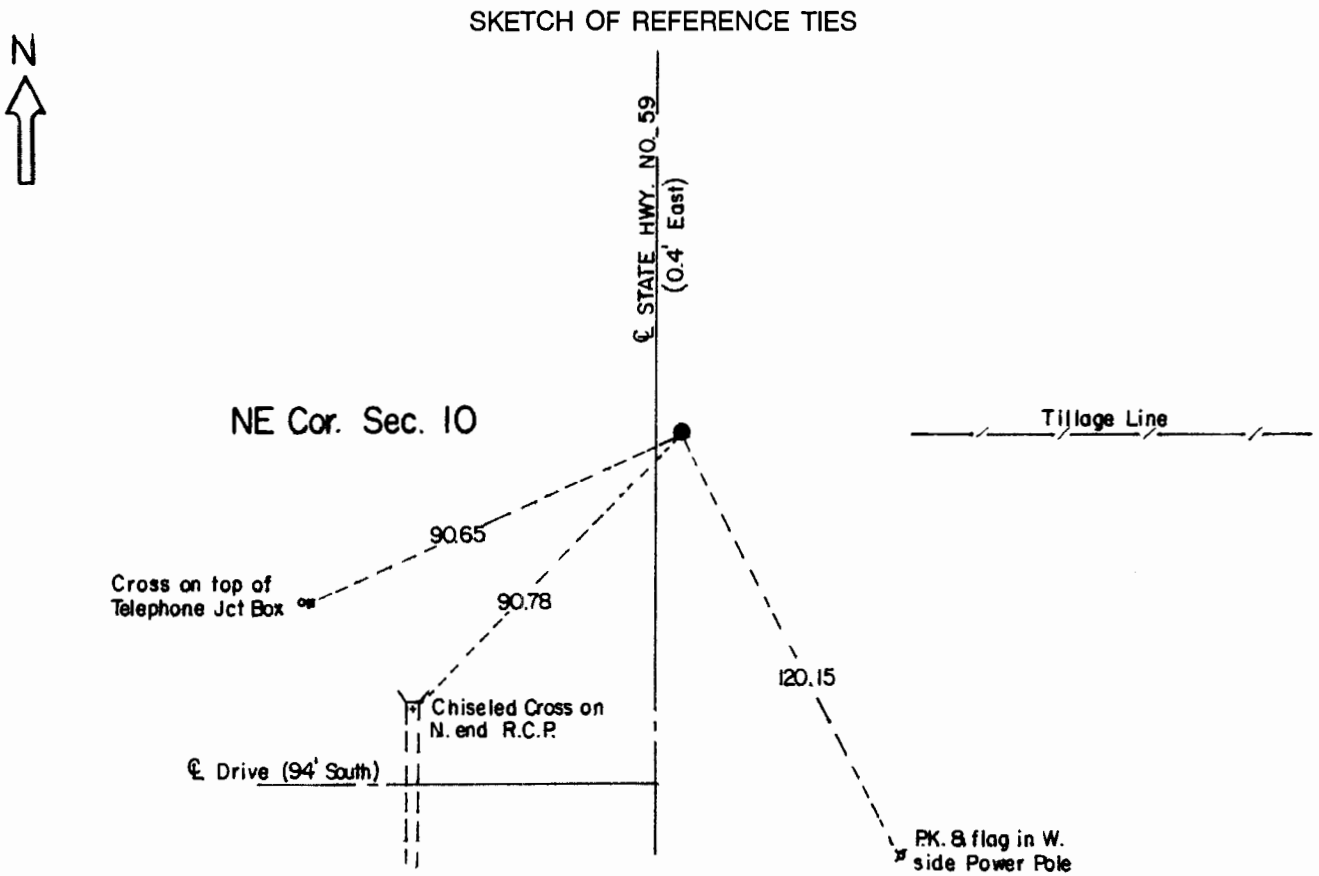


CERTIFICATE OF LOCATION OF GOVERNMENT CORNER

Northeast Corner of Section **10** , Township **107** , Range **41** 5th P.M.

STATE OF MINNESOTA, County of Murray.

Statement: Aug. 22, 1989 - Found a brass plug placed in the concrete road surface by the Minnesota Department of Highways in 1932. Left the monument as found.



Statement of evidence relative to this corner location is on the back of page.

I hereby certify that this document and the data contained herein was prepared by me or under my direct supervision and that I am a duly Registered Land Surveyor under the laws of the State of Minnesota.

Duane A. Bonnema Nov 6, 1989
 Duane A. Bonnema Date

Minnesota Registration No. 14895

OFFICE OF THE COUNTY RECORDER
 COUNTY OF MURRAY

NOV 15 1989

I hereby certify that this document was filed in the County Recorder's office at ___ M. on the ___ day of _____ A.D., 19__

County Recorder *[Signature]*

By _____, Deputy

DOCUMENT NO. _____

Northeast Cor. Sec. 10 T107N-R41W

Statement:

- August 1861 *Original Government Land Office Surveyor L. G. M. Fletcher records in his field notes, "built mound with trench pits, charred stake, per instructions."*
- May 14, 1901 *J. W. Woolstencroft, County Surveyor, records in the County Surveyor's Record Book, page 132, that he measured to the Corner while he was doing survey work in Section 2.*
- July 9, 1901 *J. W. Woolstencroft, County Surveyor, records in the County Surveyor's Record Book, page 183 "Red stone," while he was doing survey work in Section 10.*
- 1932 *The Minnesota Highway Department records in their field notes that they have their "PI on the Sec. Cor." at Station 405+79.5 of Trunk Highway No. 59. The symbol shown at this point indicated that they found a stone at this location. They note that they placed a "Brass Plug."*
- Aug. 22, 1989 *Duane A. Bonnema, LS Reg. No. 14895, removed 4 inches of asphalt pavement and found the 3/4 inch Brass Plug drilled into the concrete pavement surface by the Minnesota Department of Highways in 1932. The concrete road has an abundance of re-rod in it which hampers digging for the stone noted in 1901, however, it is believed that the State Highway Department found the 1901 stone and placed their Brass Plug directly over it.*